

# Vulcan Global Manufacturing Solutions FTP Site

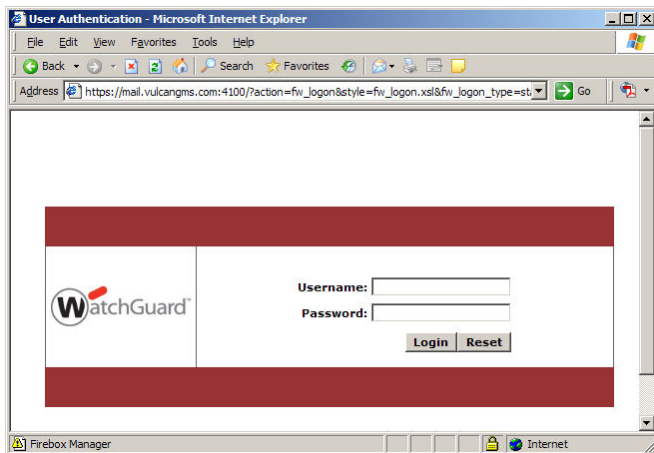
Below are instructions for logging into the Vulcan GMS FTP Site.

To successfully connect to the Vulcan GMS FTP site, port 4100 TCP will need to be open on all software and hardware firewalls used by your computer or network. This port is used to connect to our secure authentication service.

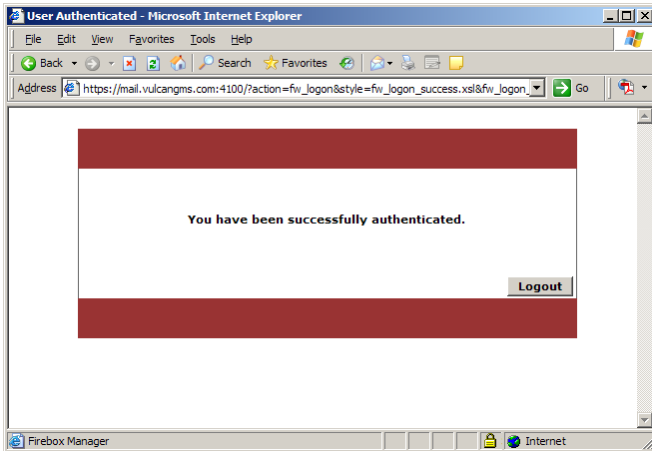
Launch Internet Explorer and go to <https://mail.vulcangms.com:4100>. You will get a **Security Alert** asking you to accept the security certificate. Click the **Yes** button.



This brings up the **User Authentication** screen. For **Username** enter **vulcanftp** and for the **Password** use **dropbox1**, then click the **Login** button to activate the authentication.



If authentication is successful, you should see the following screen.  
**DO NOT CLOSE THIS WINDOW!**

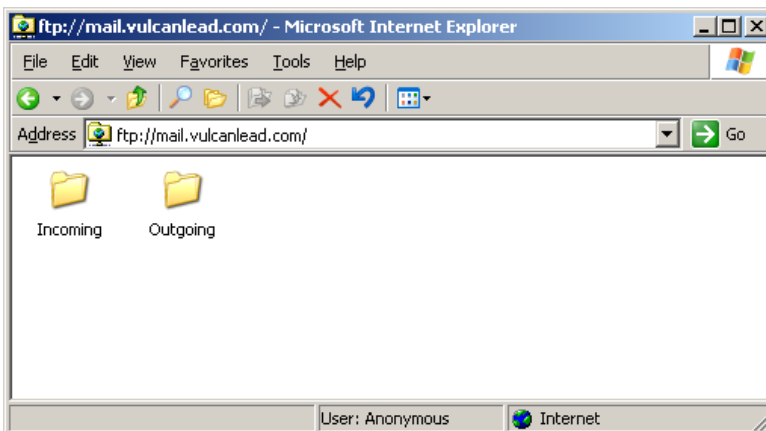


You should have received a FTP login name and password from your Vulcan GMS contact. You can now use that information with the FTP program of your choice to transfer files to/from the Vulcan Lead FTP Site.

The example below shows what FTP looks like using Internet Explorer. Enter the information in the following format into the Internet Explorer browser Address bar.

**ftp://FTPusername:Password@mail.vulcangms.com**

where **FTPUsername** = Login name received from Vulcan GMS  
and **Password** = Password received from VulcanGMS



After you are finished transferring files, please click the Logout button in the **WatchGuard User Authentication** window and close the window.