

# CASTING & DIE CASTING

## PROCESSES

---

Casting

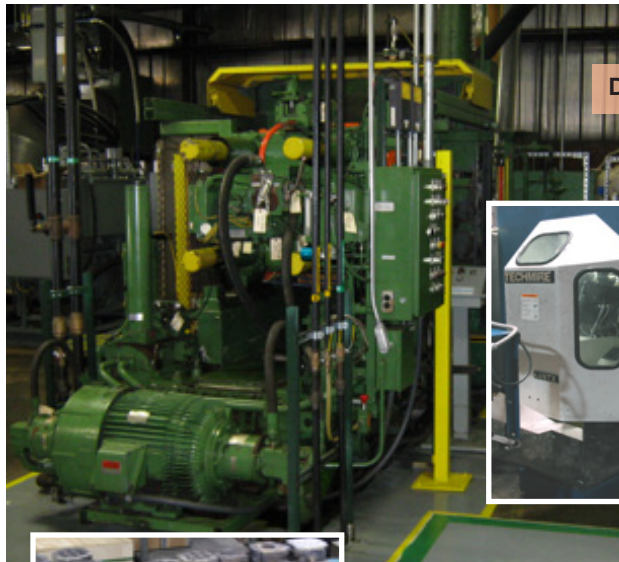
Die Casting

Lead Pouring

Paint & Powder Coating

Quality

Vulcan GMS is a custom manufacturing company that has many different capabilities for your contract manufacturing and assembly needs. Vulcan GMS is an ISO registered to 9001:2008 and we were the FIRST business of our kind to attain ISO certification in 1999. We offer multiple manufacturing techniques to achieve your needs and we can help in each step through internal design, development, manufacturing or through our sourcing, kitting and assembly of products to provide you with a true solution.



Die Casting



### DIE CASTING

- Die casting through three machines with a size range of 0 to 10 lb.
- Small run capabilities for cost effective production runs of quantities under 50 pieces.
- Vulcan also offers larger production run capabilities.

### QUALITY

- 5 CMMS
- Spectro analyzer to determine and verify material composition.
- Certified scales, measuring tools, and tracking capabilities.

SpectroMax  
Material Analyzer



## MATERIALS SUPPLIED

---

Lead

Tin

Bismuth

Pewter

Related Alloys

\*Many lead alloys and custom blends are available.

# CASTING & DIE CASTING

## PROCESSES

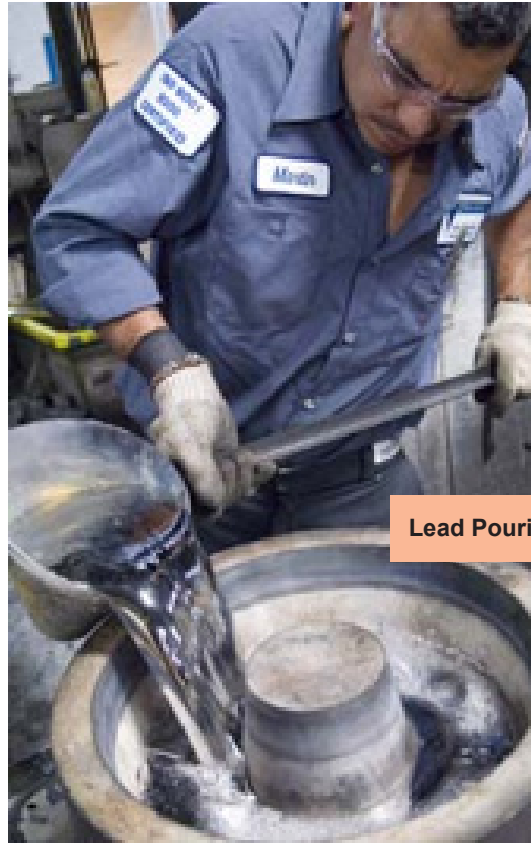
Casting

Die Casting

Lead Pouring

Paint & Powder Coating

Quality



Lead Pouring

## CASTING

- 7 melt pots between 4,000 lb and 12,000 lb each.
- Gravity casting, permanent mold casting.
- Tooling options include freestanding permanent molds, inserts to horizontal or vertical casting tables or molds, block mold options, proto tooling options.



## COATING OPTIONS

- Paint coatings
- Powder coatings

## LEAD POURING

- Lead pouring capability by pump or ladle from 0 to 20,000 lb.
- Heat treating available for preheat and controlled cool down.
- Water weight testing available.
- Gamma scanning & X-ray scanning available.

## SECONDARY OPERATIONS

- CNC machining and turning
- Heicoiling & insert installation
- Assembly

